

Glass Fragmentation Inspection System for Automotive Tempered Glass

Lumi Crack



Available For A Wide Range Of Glass Variation

Available for...

- from smoked glass to clear glass
- curved glass
- glass with printed heater grid

Automated Fragmentation Counting

Analysis will be done automatically using our unique image processing.
The results have higher accuracy and reproducibility.

Free From Blueprints, Entirely Digital

Our system has its own imaging device. All the photos and analysis data are in digital format.
Store large amount of data for long term without physical files.

Complies With
Regulations
JIS (R3211) &
ECE (R43)

Product Description

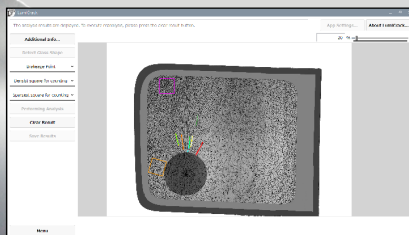
“S/W analyzer” ...Imaging Device + Software

2. Analysis Photos by Software

1. Take Photos



You can simply click “start” to start photographing, and it will be done in 8 seconds at most.



Finding sparse/dense areas and counting will be done automatically.

“S/W manager” ...Data Management Server

3. Save & Browse All the Photos and Results



Digitalizing data makes it easy to save huge amount of data and access to them.

Specification

Imaging device information

Dimensions	2,000mm(W) × 1,200mm(D) × 2,250(H)mm
Weight	Less than 300.0kg

Target glass variations

Size	150mm×150mm~920mm×1,500mm
Thickness	2.5mm~5.0mm
Visible light transmission	More than 9%
Minimum cullet size	1mm square in area

Functions

Detect target count area	Detect the densest and the sparsest 50 × 50 mm square area
Count automatically	Count the number of fragments in a 50 × 50 mm square area
Find biggest fragments	Find the top 10 fragments with the biggest surface area
Find longest fragments	Find the top 10 longest fragments

[2022/8 Ver. 1.1]



日本コントロールシステム(株)
NIPPON CONTROL SYSTEM Corporation

2-7-9, Shin-Yokohama, Kouhoku-ku,
Yokohama 222-0033 Japan
URL : <https://www.nippon-control-system.co.jp/en>
MAIL : global-sales@nippon-control-system.co.jp

Specifications and design are subject to change without prior notice.