

# GREEN

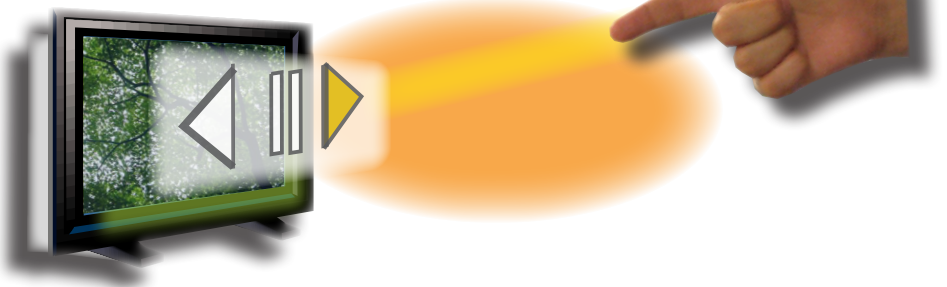
## Gesture REcognition Engine ENvironment

Nippon Control System Corp.

**GREEN (Gesture REcognition Engine Environment) performs recognition based on depth images and offers new touchless user interface that you can operate by 'gestures' such as hand movements.**

### Capture gestures from depth images

GREEN is a solution for interactive products or services to capture 'gestures' such as posture or movement of human in real-time. The gesture recognition engine, that is the core of GREEN, detects 3-D coordinates of body parts in real time and recognizes 'gesture', analyzing those positional relation and movement. Interacting with natural human movement such as handwaving or sticking out one's hand, the application can provide completely new user interface.

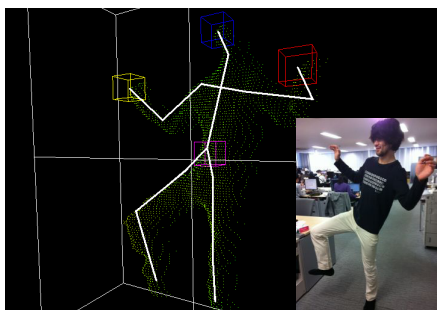


### Realize a touchless user interface

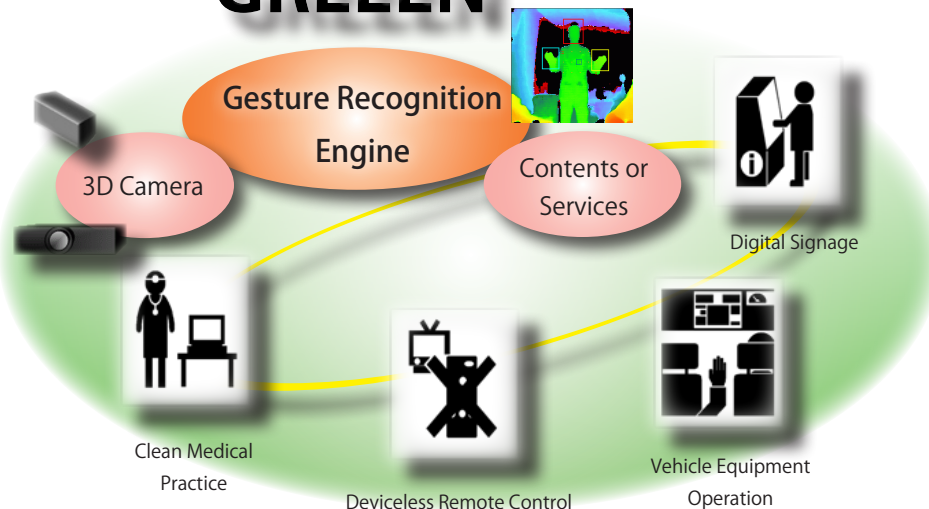
GREEN has prepared touchless user interfaces such as 'virtual touch panel' that you can operate by just your hand movement. Of course, you can implement new gesture control features or feedbacks. Your products and services can provide operations like 'push the button', 'choose contents'.

### Support for Multiple Types of Devices

Depth cameras have big difference at image quality, resolution, field of view, sensing range, and also outdoor capability, physical limits etc. Because GREEN supports multiple types of cameras (TOF, structured light, etc.), you can choose the optimal camera for your situation.



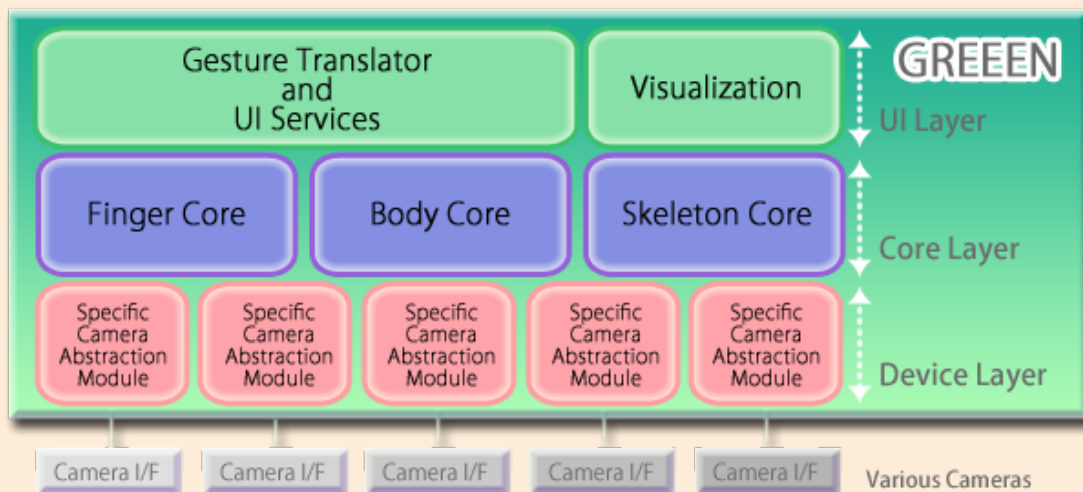
## GREEN



# Gesture REcognition Engine ENvironment

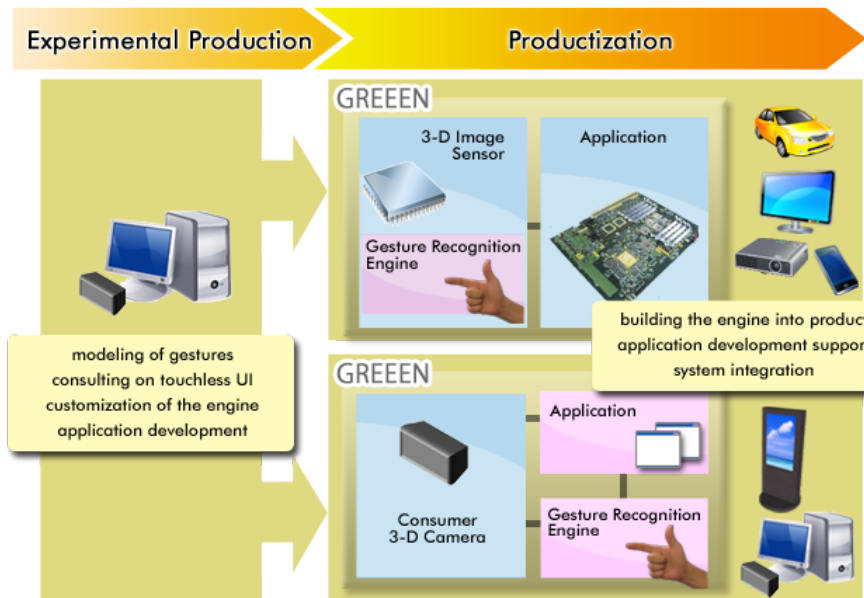
Nippon Control System Corp.

## Flexible middleware environment consisting of highly independent layers



GREEN is the framework composed of highly independent components that are implemented using unique technology of NCS. It is appreciated in various fields as a solution that does not depend on specific devices.

## Easily Enable touchless interaction with your products and services



### Support through all of the stages of product development

GREEN enables rapid development of touchless interactive systems corresponding with the market needs. We extensively support customers as a partner from the experimental stage through consulting on touchless interaction, customizing the engine and providing overall system for mass products or services.

### Enable porting to embedded environment

The core of GREEN does not depend on a specific OS or library, so it can be applicable to various platforms. You can easily port existing PC-based prototype to the embedded environment with GREEN.

**NCS**

日本コントロールシステム(株)

Inquiry about GREEN:

**Nippon Control System Corporation**  
Shin-Yokohama Office

2-7-9, Shin-Yokohama, Kouhoku-ku, Yokohama 222-0033 Japan

TEL : +81-45-477-5800 FAX : +81-45-477-5811

URL : <http://www.nippon-control-system.co.jp>

Email : [green@nippon-control-system.co.jp](mailto:green@nippon-control-system.co.jp)