

Multifunction Analyzer for UHDTV

DAB8000 mini Series

6-in-1 Analyzer for 4K 8K

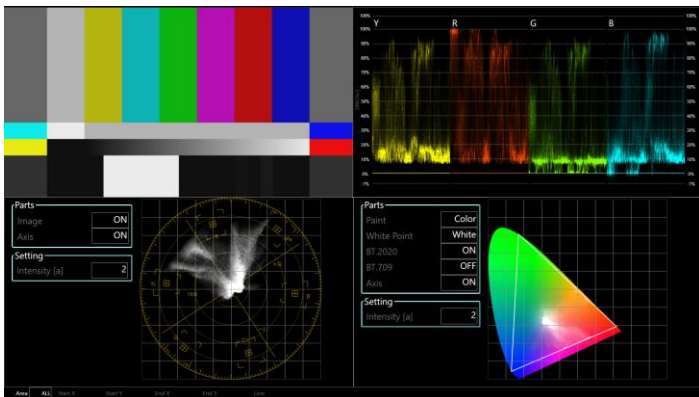
- Full support for UHDTV(BT.2020)
- Latest update for U-SDI *
- 3U half-rack size as the smallest **



* Ultra high-definition Signal/Data Interface (ARIB STD-B58, ITU-R BT.2077 Part2)
** UHDTV-compatible waveform monitor, according to our own research in the industry.

1. Waveform monitor

Multiple waveforms can be monitored on the screen while those are analyzed in real time. The processing delay in the analysis is reduced by the specialized hardware, and it provides monitoring without discomfort.



Waveform monitor

3. Pattern generator *

Test pattern generation, such as a color bar or gray scale can adapt to the verification of product development.

4. Audio analyzer *

Sound analysis function of the UHDTV standard corresponding maximum 32ch provides a loudness audio level bar display and a surround display. Multiple information types can be monitored simultaneously on the screen.

5. Signal converter *

This function is the mutual interface conversion between U-SDI and 8K 3G-SDI. It also provides the image structure conversion between RGB and YCbCr.

2. Protocol analyzer *

The real time analysis enables an immediate identification of cause when a protocol error happens in the development stage or in the connection between equipment.

CH	Status	Mode	BitRate	Family	Freq	Scan	Level	CRC-A	CRC-B	DG Ch-A	DG Ch-B
1	LINK	3G-SDI	2.97/1.001	SMPTE ST 274 (1920x1080)	29.97	Interface	LevelB	OK	OK	-	-
2	LINK	3G-SDI	2.97/1.001	SMPTE ST 274 (1920x1080)	29.97	Interface	LevelB	OK	OK	-	-
3	LINK	3G-SDI	2.97/1.001	SMPTE ST 274 (1920x1080)	29.97	Interface	LevelB	OK	OK	-	-
4	LINK	3G-SDI	2.97/1.001	SMPTE ST 274 (1920x1080)	29.97	Interface	LevelB	OK	OK	-	-
5	LINK	3G-SDI	2.97/1.001	SMPTE ST 274 (1920x1080)	29.97	Interface	LevelB	OK	OK	-	-
6	LINK	3G-SDI	2.97/1.001	SMPTE ST 274 (1920x1080)	29.97	Interface	LevelB	OK	OK	-	-
7	LINK	3G-SDI	2.97/1.001	SMPTE ST 274 (1920x1080)	29.97	Interface	LevelB	OK	OK	-	-
8	LINK	3G-SDI	2.97/1.001	SMPTE ST 274 (1920x1080)	29.97	Interface	LevelB	OK	OK	-	-
9	LINK	3G-SDI	2.97/1.001	SMPTE ST 274 (1920x1080)	29.97	Interface	LevelB	OK	OK	-	-
10	LINK	3G-SDI	2.97/1.001	SMPTE ST 274 (1920x1080)	29.97	Interface	LevelB	OK	OK	-	-
11	LINK	3G-SDI	2.97/1.001	SMPTE ST 274 (1920x1080)	29.97	Interface	LevelB	OK	OK	-	-
12	LINK	3G-SDI	2.97/1.001	SMPTE ST 274 (1920x1080)	29.97	Interface	LevelB	OK	OK	-	-
13	LINK	3G-SDI	2.97/1.001	SMPTE ST 274 (1920x1080)	29.97	Interface	LevelB	OK	OK	-	-
14	LINK	3G-SDI	2.97/1.001	SMPTE ST 274 (1920x1080)	29.97	Interface	LevelB	OK	OK	-	-
15	LINK	3G-SDI	2.97/1.001	SMPTE ST 274 (1920x1080)	29.97	Interface	LevelB	OK	OK	-	-
16	LINK	3G-SDI	2.97/1.001	SMPTE ST 274 (1920x1080)	29.97	Interface	LevelB	OK	OK	-	-

Protocol analyzer

6. Focus assist *

The focus assist information is displayed in real time. It enables you to focus target easily in difficult situations with 8K camera.



Focus assist

* Optional function

DAB8000 mini Series



General Characteristics

Interface

Model Number	Input			Output		
	24 core optical fiber cable *1	3 G-SDI	12G-SDI	24 core optical fiber cable *1	3G-SDI	12G-SDI
DAB8000	1ch	-	-	1ch *3	-	-
DAB8003	1ch	16ch(8K)	-	1ch *3	16ch(8K)/4ch(4K)	-
DAB8012	1ch	-	4ch(8K) *2	1ch *3	-	4ch(8K)/1ch(4K)
DAB8103	-	16ch(8K)	-	-	16ch(8K)/4ch(4K)	-
DAB8112	-	-	4ch(8K) *2	-	-	4ch(8K)/1ch(4K)

Interface

Display monitor	7.0 inch Full HD
Input / Output	USB, DVI, Ethernet
Voice output	Stereo mini jack

Video format

Resolution	7680 x 4320 pixels, 3840 x 2160 pixels
Frame rate	120Hz, 120/1.001Hz, 60Hz, 60/1.001Hz
Pixel structure	4:4:4 RGB, 4:4:4 YCbCr, 4:2:2 YCbCr, 4:2:0 YCbCr
Bit number	10bit, 12bit

General information

Size, Weight, Consumed power	123.8(H) x 220(W) x 350(D) mm, 5.5kg, Less than 200W(Typ.)
Operating temperature, humidity	0~40°C, 30~80%RH (No condensation permitted)
Accessories	Operating manual x 1, CD-ROM x 1, Power cable x 1

*1 ARIB STD-B58 , ITU-R BT.2077 Part2 *2 With through out *3 With ReClock through out

Functions

Waveform monitor

Picture display	Dot by Dot display
	Down Convert display
Vector display	
Waveform display	YRGB Parade display
Chromaticity diagram display	CIE Chromaticity Diagram display
Histogram display	Brightness Level Histogram
	Video Level Histogram

Protocol analyzer

All data analysis mode (specified line data part)
Header data part analysis mode

New! Eye Monitor

Pattern generator

Color bar, Linear, Flat	Display Timecode
Ancillary (audio 32ch and timecode)	Color Level
New! Scroll Speed (x-axis and y-axis)	New! Overlay Bouncing Square

Audio analyzer

Loudness audio level bar display **New!** Audio Lissajous
Surround display (maximum 32ch) **New!** Audio Packet Monitor

Signal converter

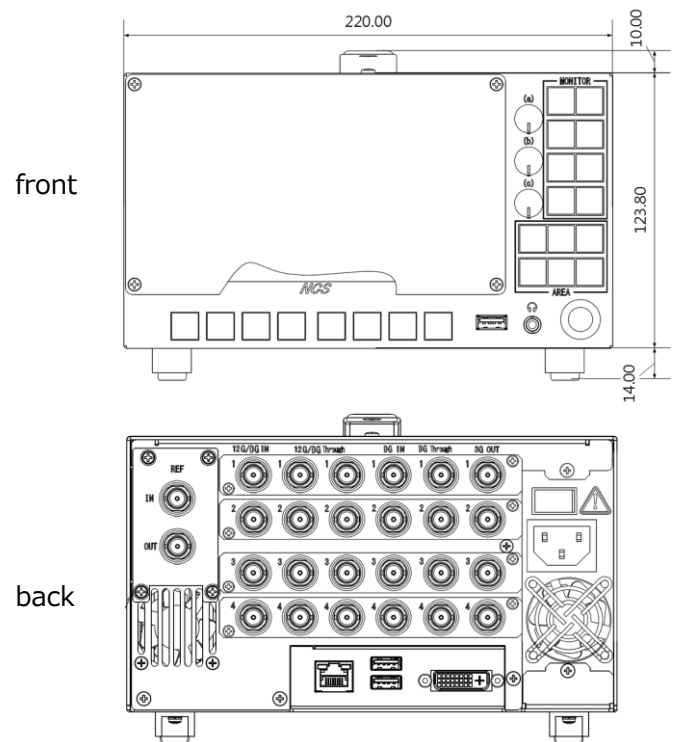
Interface Conversion
Image Structure Conversion

Focus assist

8K Image Correspondence

External Dimensions

Model Number: DAB8112 mini



NIPPON CONTROL SYSTEM Corporation

Shin-Yokohama Office:

2-7-9, Shin-Yokohama, Kohoku,
Yokohama, 222-0033 JAPAN

TEL : +81-45-477-5800

URL : <https://www.nippon-control-system.co.jp/>

MAIL : global-sales@nippon-control-system.co.jp

2018/10 [BEA-DTS-1810]

